



**jaltest**  
AGV



[jaltest.com](http://jaltest.com)

**JALTEST** PROVIDES YOU  
WITH THE EXPERIENCE  
OF MORE THAN 15 YEARS  
DEVELOPING MULTIBRAND  
DIAGNOSTIC SOLUTIONS.



## Index:

JALTEST AGV	04 - 07
SOFTWARE	08 - 17
JALTEST KITS	18 - 23
HARDWARE	24 - 25
SERVICES	26 - 27
TELEMATICS	28 - 29

“

**JALTEST.  
INDUSTRY-LEADING  
DIAGNOSTICS SOLUTIONS FOR  
THE AGRICULTURAL WORKSHOP.**

”

UPGRADE YOUR BUSINESS  
WITH JALTEST DIAGNOSTICS.



AGRICULTURAL.

COMMERCIAL.



OFF-HIGHWAY.

MARINE.



# “ Jaltest AGV. ”

Jaltest AGV is a Multibrand and Multisystem diagnostics solution developed to perform the most advanced agricultural machinery and equipment diagnostics and maintenance tasks in an easy and intuitive way.

Jaltest is not limited to reading fault codes on vehicle systems, it also features bi-directional controls and guided troubleshooting.

Jaltest After-Sales Support is focused to deliver professional solutions for the workshop through:

- Technical Assistance.
- Training & e-Learning.
- Specialized Customer Support.



## JALTEST IS AIMED TOWARDS ALL DIAGNOSTICS PROFESSIONALS.



TRACTORS



COMBINES



FORAGE HARVESTERS



GRAPE HARVESTERS



TELEHANDLERS



OTHER

### COVERAGE.

CASE IH  
CATERPILLAR  
CHALLENGER  
CLAAS  
DEUTZ - FAHR  
FENDT  
GREGOIRE

HÜRLIMANN  
JCB  
JOHN DEERE  
KUBOTA  
LAMBORGHINI  
LANDINI  
MASSEY FERGUSON

MCCORMICK  
NEW HOLLAND  
SAME  
STEYR  
VALTRA  
WEIDEMANN  
...

- 1. GRP (Garage Resource Planning) is the workshop management program which organizes and manages its activity.
- 2. Jaltest Iparts. Parts cross-referencing platform.
- 3. Diagnostics Menu.
- 4. System Technical Data.
- 5. Wiring diagrams, and fuses and relay boxes.

- 6. Vehicle Service Data.
- 7. Vehicle Technical Information.
- 8. Troubleshooting Guides by symptoms.
- 9. Releases and Procedures.
- 10. Troubleshooting Guides by Fault Codes.

The screenshot shows the Jaltest AGV diagnostic software interface. At the top, there is a navigation bar with icons for GRP, Iparts, ETM, and PASS THRU. Below this is a status bar showing the vehicle model: '8R Series | ECU HPCR (Level 33 - Final Tier 4 / Stage IV), Electr...'. The main area is titled 'DIAGNOSIS' and displays 'ERROR(S) STORED IN MEMORY: 4'. The error list is as follows:

Error Code	Count	Description	Info	Help	Clear	Print
97.04	x1	Water sensor in the fuel. The signal voltage is too low.	i	?		
100.03	x1	Engine Oil Pressure. Signal value out of range. High signal.	i	?		
655.18	x1	Injector Cylinder 5. No response.	i	?		
3226.09	x1	NOx sensor behind the SCR catalyst. Communication error.	i	?		

At the bottom of the interface, there are filters for 'PRESENT ERROR', 'NON-PRESENT ERROR', and 'OTHERS'. The status bar at the very bottom shows 'Days of licence: 226' and the time '9:39'.

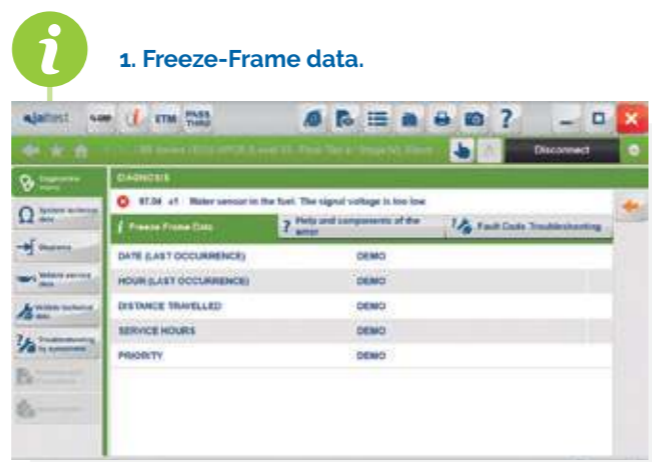


# “Software.”

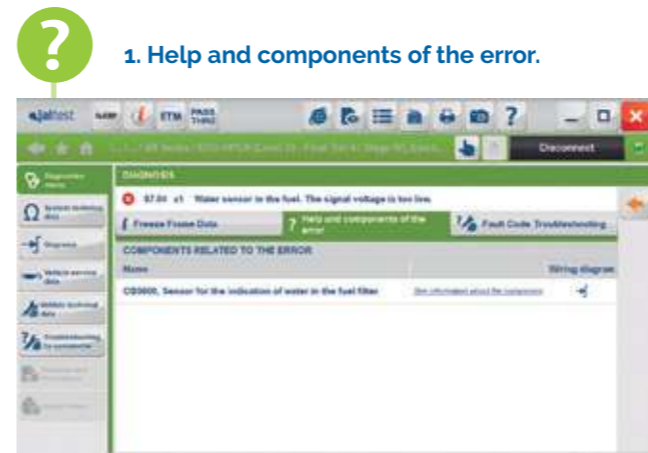
## GUIDED DIAGNOSTICS.

Jaltest provides the necessary information to repair agricultural equipment breakdowns in an easy and effective way.

JALTEST PROVIDES A GREAT AMOUNT OF ADDITIONAL HELP FOR THE TECHNICIAN. MORE THAN DIAGNOSTICS...



**i** 1. Freeze-Frame data.



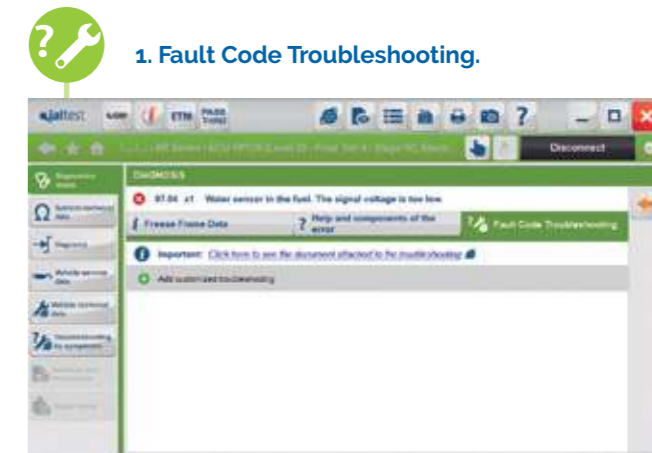
**?** 1. Help and components of the error.



**?** 2. Component information and location.



**?** 3. System wiring diagram.



**?** 1. Fault Code Troubleshooting.

**?** 2. Troubleshooting details.











**?** 3. Troubleshooting technical bulletins.





## BEST-IN-CLASS REPAIR GUIDES, ONE CLICK AWAY.

Detailed technical information including images, pictograms, graphics, diagrams and pictures for every vehicle to be diagnosed. This information will help to identify the error code, the part, the location... In this complete module we can find:

-  Diagnostics (troubleshooting by error code).
-  Vehicle Service Data.
-  System Technical Data.
-  Troubleshooting by symptoms (diagnostics).
-  Diagrams.
-  Releases and Procedures.
-  Vehicle Technical Data.
-  Manual Diagnosis.



The software interface on the laptop shows a search bar for symptoms, a list of engine-related issues such as 'Excessive consumption of engine oil', 'Excessive fuel consumption of the engine', and 'The engine gets excessively heated up'. The 'The engine gets excessively heated up' entry is highlighted in green. To the right, a detailed diagram of a thermostat is shown with numbered steps: 'Step 1: Check the radiator cap.', 'Step 2: Check the thermostat.', and 'Step 3: Check the fan.'. The diagram includes labels A, B, C, and D, and a gauge showing a temperature range from 10 to 30. The laptop is a Panasonic model, and the user's hands are visible typing on the keyboard.

JALTEST INFO IS THE  
BENCHMARK TECHNICAL  
INFORMATION DATABASE  
IN THE MARKET.



# JALTEST DELIVERS RESULTS, AS SOON AS THE VEHICLE ENTERS THE WORKSHOP.

GRP IS AN OPTIMIZED WORKSHOP MANAGEMENT SOLUTION. IT SHARES CUSTOMER INFORMATION, VEHICLE DATA AND DIAGNOSTIC REPORTS, WORK ORDER MANAGEMENT, LABOR TIMES AND ACCESS TO JALTEST TELEMATICS SOLUTIONS.

#### GRP BASIC:

- Clients list.
- Reports (diagnosis, maintenance).

#### GRP SYNCHRO:

- GRP Basic.
- User accounts control (10 maximum).
- Data Synchronization between multiple PCs, (same Jaltest interface).
- Information Back-up.
- Human Resources.

#### GRP ENTERPRISE:

- GRP Synchro.
- Workshop Management Module.
- Reception Module.
- My Tasks Module.
- Jaltest Telematics Module.
- Data synchronization between PCs (same company).
- Work order reports.
- User accounts control (unlimited).

#### GRP NETWORK:

Access to diagnosis and maintenance reports between multiple workshops inside a network.

#### GRP MODULES DESCRIPTION:

**CLIENTS LIST:** The management of customers for a workshop or a network of workshops.

**REPORTS:** The management and consultation of all reports generated by Jaltest: diagnosis, maintenance, work order and repair times.

#### WORKSHOP MANAGEMENT:

- Work orders.
- Task.
- Workshop time reports.

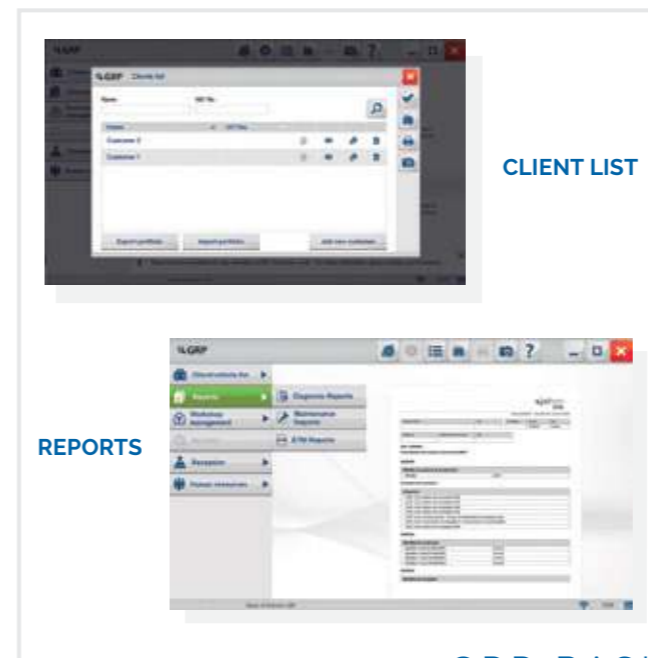
**MY TASK:** Each user can manage the assigned tasks easily by this menu.

#### RECEPTION:

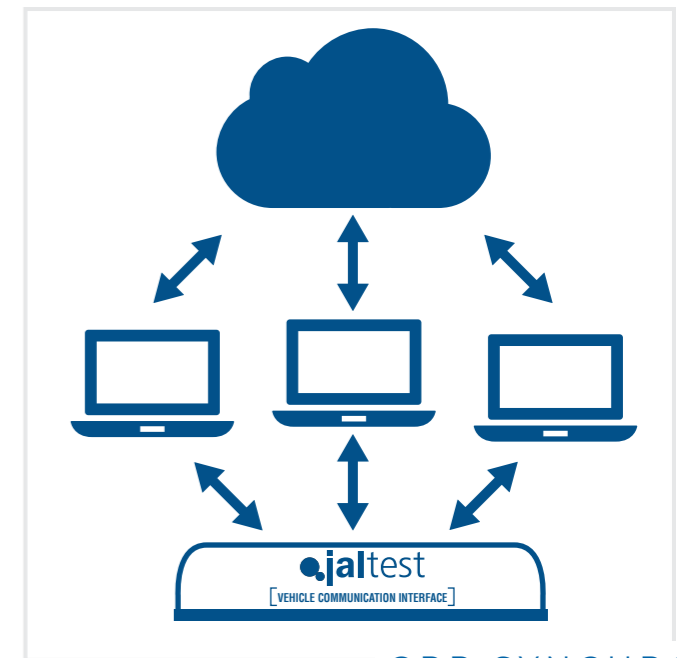
- Reception forms.
- Work orders managements.

**HUMAN RESOURCES:** Intended for the management of the workshop's staff.

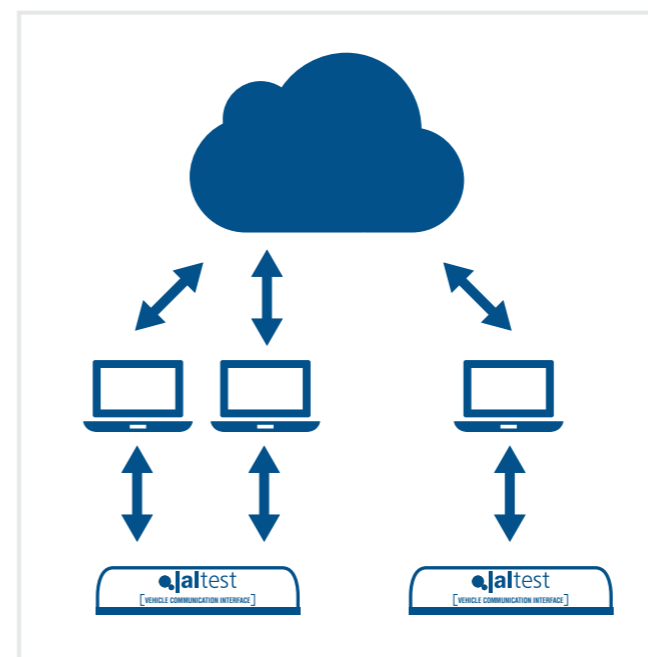
**JALTEST TELEMATICS:** Connection between the fleet, workshop and truck driver. It allows the user to receive notifications and alarms sent by the fleet manager.



GRP BASIC.



GRP SYNCHRO.



GRP ENTERPRISE.



GRP NETWORK.



# OUTSTANDING FEATURES.

## 1. INTERACTIVE WIRING DIAGRAMS.

While navigating over the wiring diagrams, the components are outlined and the technical information including relevant documents, technical data, comments, location can be directly accessed.



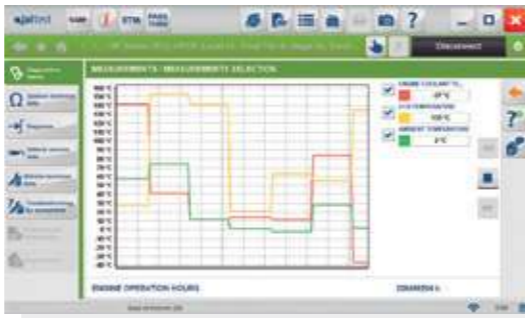
## 2. SYSTEM OPERATING DIAGRAM.

Understanding how systems work can be a complex task. Jaltest provides the pneumatic, electrical and fuel schematics with their corresponding technical values, images, locations and much more to speed up the technician's work.



## 3. SYSTEM DISPLAY.

Real-time live data display on vehicle schematics for a fast assessment of the functioning of the system.



## 4. VIRTUAL INSTRUMENTS / GRAPHS.

Visual aid for the mechanic to check values and understand the actual status of any system available in the vehicle.



5. FARM FLEET CUSTOMIZATION
6. NUMBER PLATE IDENTIFICATION.
7. ALL SYSTEMS SCAN.
8. MAIN SYSTEMS SCAN.
9. SHORTCUTS TO SPECIAL FUNCTIONS.
10. TECHNICAL DATA AND PROCEDURES.

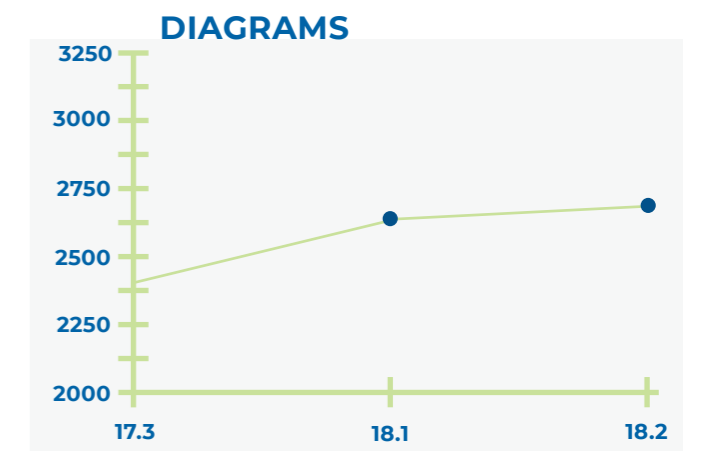
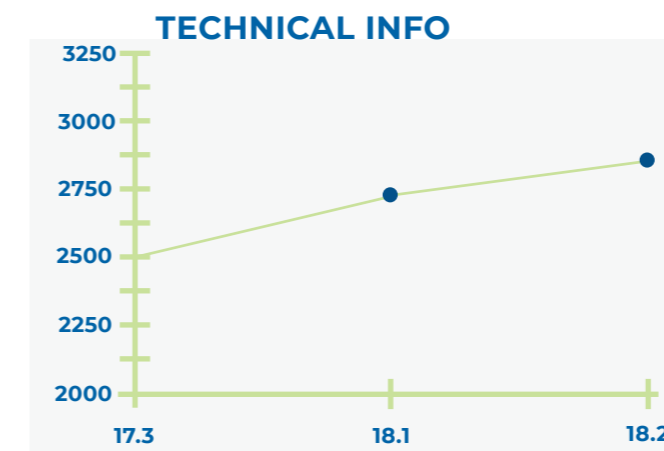
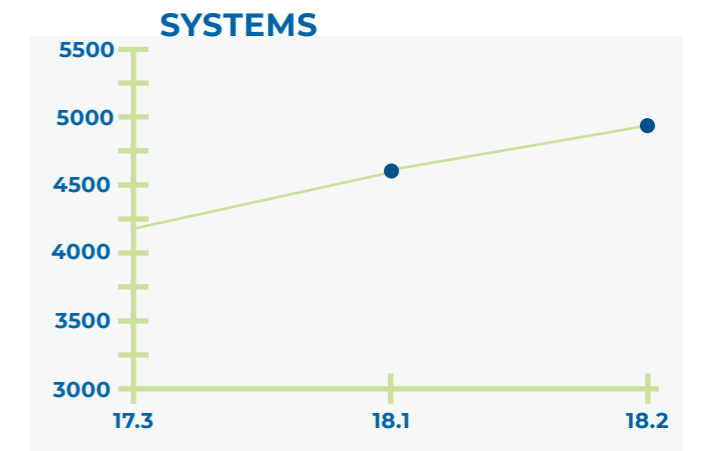
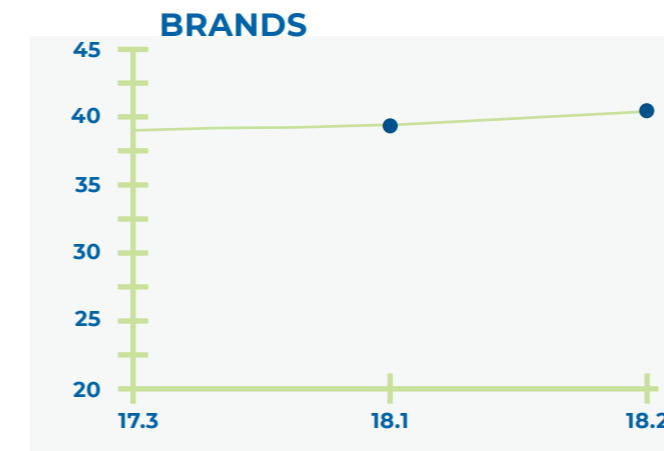
# JALTEST EXPERT MODE. FOR EXPERT TECHNICIANS.

- Calibration of sensors and actuators (VGT actuator, EGR valve, transmission systems, rear lift, etc).
- Setting of the system operation parameters (Injector coding, spool valves number programming, etc).
- Configuration of the vehicle maintenance services.
- Verification of system functionalities.
- Replacement of diesel particulate filter.
- DPF regeneration.
- (...)



# EXPECT INNOVATIONS. CONSISTENTLY.

THREE ANNUAL SOFTWARE UPDATES.



# “ Jaltest AGV Kit. ”

**JALTEST AGV OFFERS  
GLOBAL SOLUTIONS FOR  
THE AG WORKSHOP.**

## **JALTEST AGRICULTURAL VEHICLES.**

Jaltest is placed as a benchmark in this market by launching an application with great advantages and possibilities for an effective diagnosis on agricultural vehicles. Following the functions from the other Jaltest modules, Jaltest completes this version with a great coverage for brands, systems and technical information, as well as with a wide range of cables for direct connection.



## OUR WIDE COVERAGE MAKES THIS TOOL THE MOST POWERFUL DIAGNOSTICS SOLUTION IN THE MARKET.

- ✓ COVERAGE FOR TRACTORS, COMBINES, FORAGE & GRAPE HARVESTERS, TELEHANDLERS AND MORE.
- ✓ ALL COMMUNICATION PROTOCOLS ARE SUPPORTED.
- ✓ INTUITIVE AND QUICK SOFTWARE INTERFACE.
- ✓ AUTOMATIC DETECTION OF SYSTEMS AND ERROR CODES.
- ✓ TROUBLESHOOTING BY SYMPTOMS AND ERRORS HELP.
- ✓ INTEGRATED TECHNICAL INFORMATION, WIRING DIAGRAMS, TECHNICAL DOCUMENTS...
- ✓ PROGRAMMED UPDATES AND LATEST DEVELOPMENTS IMPLEMENTATIONS.
- ✓ CALL-CENTER FOR TECHNICAL AND PRODUCT SUPPORT.
- ✓ TRAINING & E-LEARNING.
- ✓ IPARTS - SPARE PARTS INFORMATION.
- ✓ GRP - GARAGE RESOURCE PLANNING.
- ✓ VEHICLE BRAND CUSTOMIZATION.



# JALTEST CV KIT.

## JALTEST COMMERCIAL VEHICLES.

Diagnostics equipment aimed for workshops where repair and/or maintenance services are performed in several types of commercial vehicles, such as: Trucks, Buses, Trailers, LCVs, Pick-ups.

This wide coverage, as well as the additional diagnosis modules (Jaltest INFO, GRP, ETM, iParts, Troubleshooting) and the possibility of configuring additional brands by the workshop, makes the Jaltest Commercial kit the Industry-Leading diagnostic solution.



RP1210



# JALTEST OHW KIT.

## JALTEST OFF-HIGHWAY VEHICLES.

This Jaltest OHW kit has been developed to perform diagnosis in special and construction vehicles such as cranes, excavators, dumpers, stationary engines or street sweepers and road maintenance equipment. The wide coverage, the technical information and the repair guides make Jaltest OHW the reference tool in the sector.

**jaltest**  
OHW  
OFF-HIGHWAY VEHICLES

RP1210      



# “ Hardware. ”

All Jaltest AGV products have been designed to meet the demands and needs of the workshop technicians and the most demanding road assistance needs. They are designed and built to face any extreme work or weather conditions.



- 
- 
- 
- 
- IP5X
- MIL-STD-810G

## JALTEST RUGGED PC.

Our newest model of ruggedized laptop. The new Jaltest Rugged PC with Windows 10 Pro is one of the most compact and lightest semi-rugged laptops available today. With an exclusive design that improves resistance, a MIL-STD 810G category certification and a liquid-resistant keyboard/touchpad, the Jaltest Rugged PC is your # 1 Jaltest Diagnostics computer choice.



## JALTEST AGV LINK.

The tool's heartbeat, programmed to convey information with all communication protocols in a quick and efficient way.



## WORKSTATION TROLLEY.



## HARDCASE.

Hardcase suited for the transport of the tool together with all its accessories and cables. It is suited to withstand humidity conditions, bumps...



## CABLES.

The necessary cables to connect to any agricultural vehicle are provided by Jaltest. High quality and resistance hermetic plastic injection cables. Jaltest AGV also includes a multipin kit which provide better connection coverage.



# “ Services. ”

## 1. TRAINING.

To perform diagnosis, repair or maintenance tasks, we do not only require mechanical knowledge. Today, new agricultural vehicles with new electronic systems demand a continuous training turning our skills into a great working tool, in order to deal with any kind of vehicle repair and maintenance as new as it may be.

For this reason, Cojali has created an extensive training plan, comprising both theory and practice. This training plan is multi-language and it may be taught in Cojali's training classrooms or in any other locations. Moreover, it has been designed with an e-learning format to follow the course on-line from any place.

## COURSES.



## 2. TECHNICAL ASSISTANCE.

This kind of support is essential to solve certain vehicle breakdowns. Technological developments require the mechanics to update their knowledge regularly. Cojali offers a specialized support based on the experience of our technicians and the development of technical information for agricultural vehicle systems.

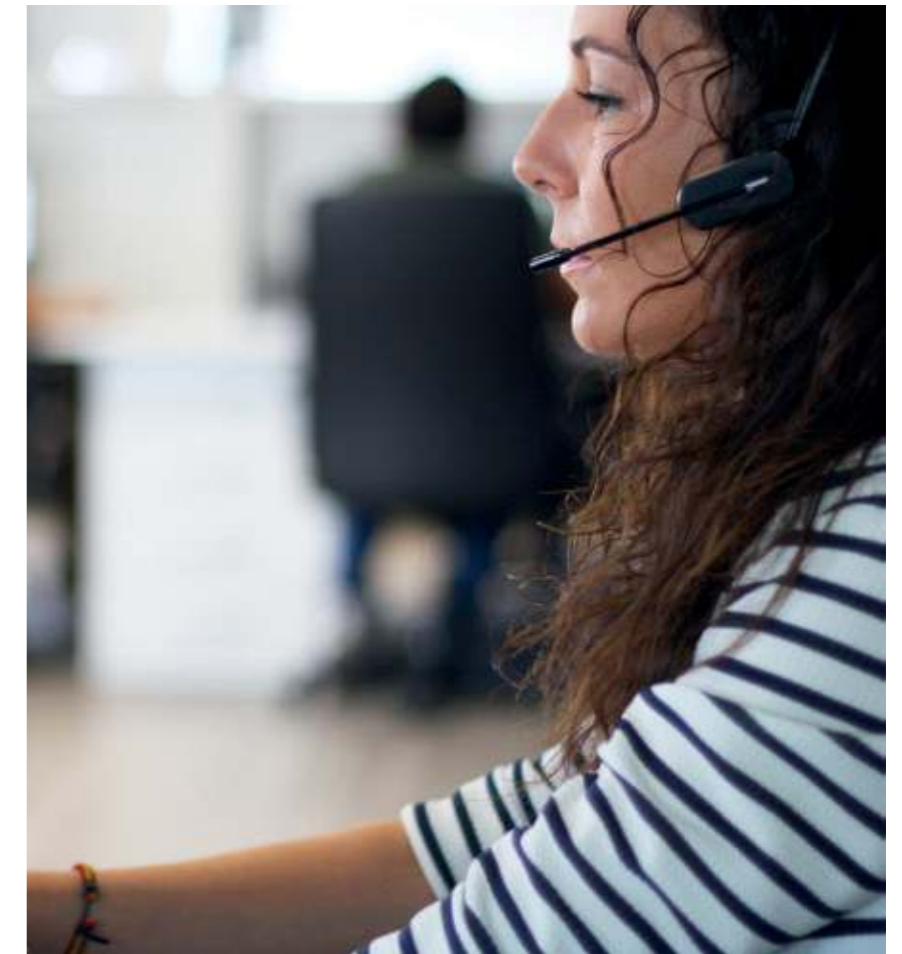
## 3. CUSTOMER SERVICE.

An expert team will be at your service to offer all the information about JALtest you may need.

- Update innovations.
- Software update forecasts.
- Device licenses management.
- New products, hardware and software.
- Special offers.
- Invoices and purchase orders.
- Shipping and warranty management.



THE CHANCE TO TURN YOUR AG VEHICLE WORKSHOP INTO A TECHNOLOGICAL CENTRE IS IN YOUR HANDS.



# “Jaltest Telematics.”

## TELEMATICS, DIAGNOSIS AND FLEET MANAGEMENT, A SOLUTION FOR EVERYTHING.

- Cloud Diagnostics.
- Real time fleet health-check.
- Breakdown time reduction.
- ROI optimization.
- Predictive maintenance. Workshop 4.0.
- Reduction of TCO.
- Integration with 3rd party Fleet Management Systems.



**1<sup>st</sup>**  
**REMOTE**  
**DIAGNOSTICS**  
**& TELEMATICS**



- 🔍 CLOUD DIAGNOSTICS.
- 📁 WORKBOOKS.
- 📧 WORKSHOP NOTIFICATIONS.
- 🛠️ PREVENTIVE MAINTENANCE.
- 📍 LOCATION.
- 🛢️ FUEL.
- 🕒 WORKING HOURS ANALYSIS (ACTIVE, PASSIVE).
- 🕒 ALARMS.
- 📄 REPORTS.
- 🚛 IMPLEMENTS MANAGEMENT.
- ✉️ MESSAGES.



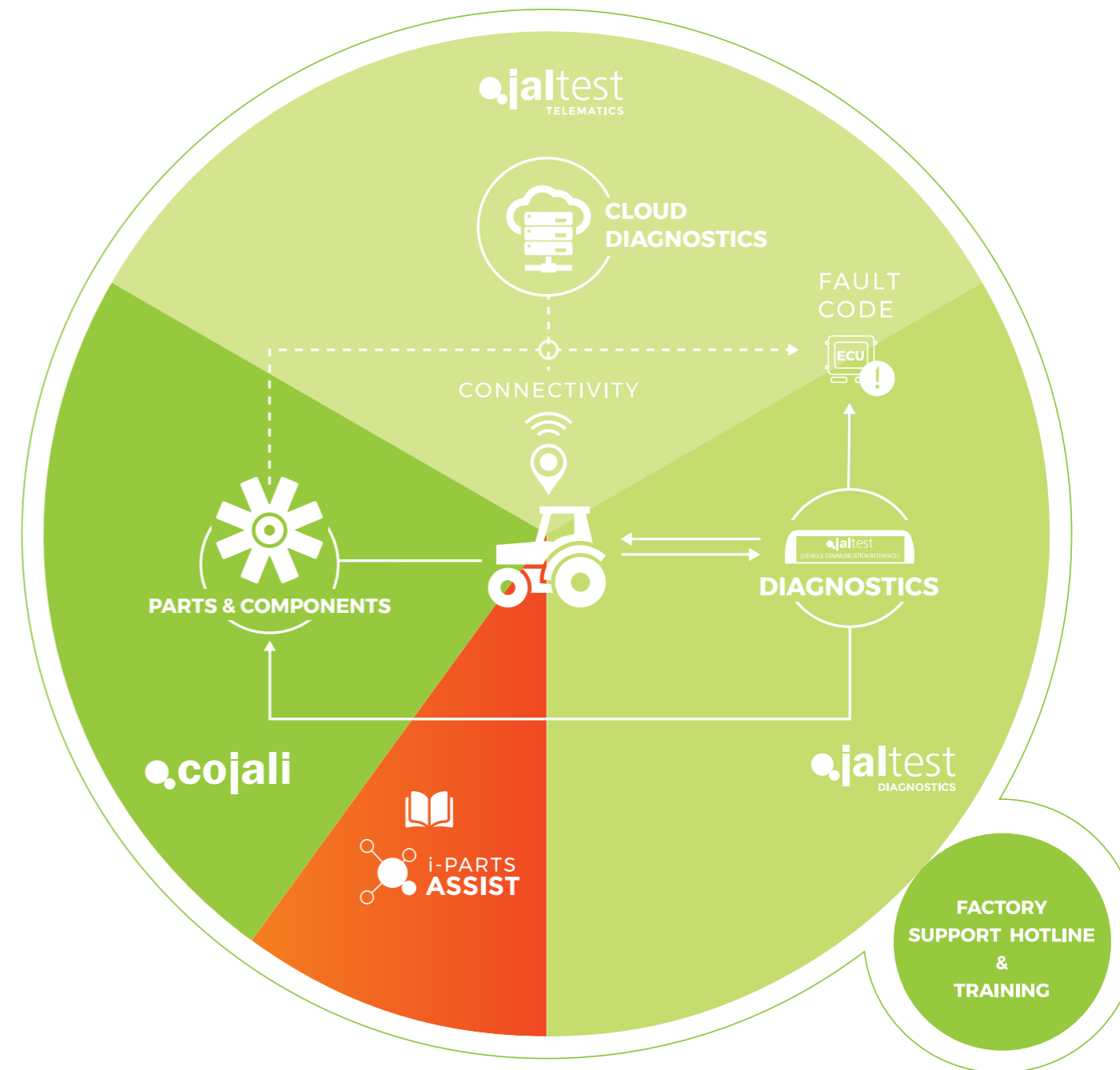


# “Workshop 4.0.”

## JALTEST OFFICIAL SERVICE.

Solutions and Services that connect workshops, fleets and Parts Distributors in order to perform a professional, fast and efficient repair; through Diagnostics Equipment, Cloud Diagnostics and the latest generation Components for industrial vehicles.

Workshop 4.0. is distinguished by offering Training services, Vehicle Fix support, Consulting and Support for the installation and reprogramming of components.



# “Workshop 4.0.”

## CUTTING-EDGE DIAGNOSTICS

- System Technical Data.
- Diagrams.
- Vehicle Technical Data.
- Vehicle Service Data.
- Troubleshooting by symptoms.
- Technical Releases.
- Repair Times.
- Manual Diagnosis.

## BIG DATA ANALYTICS

- Preventive maintenance.
- Predictive maintenance.
- Components life cycle.
- Vehicle usage.
- ECU Frequent failures and history.

## ASSOCIATED SERVICES

- Training and e-learning.
- Vehicle Fix support.
- Consulting: Diagnostics, Telematics and Components.
- i-parts ASSIST: Parts support program.

## CLOUD DIAGNOSTICS. DATA MONITORING

- Reading of error codes (Live Data).
- Measurement of values.
- Triggered alarms.
- Systems misuse.
- Components wearing.
- Tachograph download.

## GRP (Workshop management solutions)

- Clients list.
- Reports history (sharing).
- Workshop management.
- Reception.
- Human resources.
- Jaltest Telematics.



# “i-Parts ASSIST.”

Cojali Parts Support Program for the workshop. Through guides and video tutorials, the workshop is able to carry out the installation of components that may require reprogramming or the use of diagnostics.



# “ Cojali OEM Competence. ”

**HARDWARE AND SOFTWARE  
SOLUTIONS ADAPTED TO  
IMPLEMENT MANUFACTURERS.**



Components



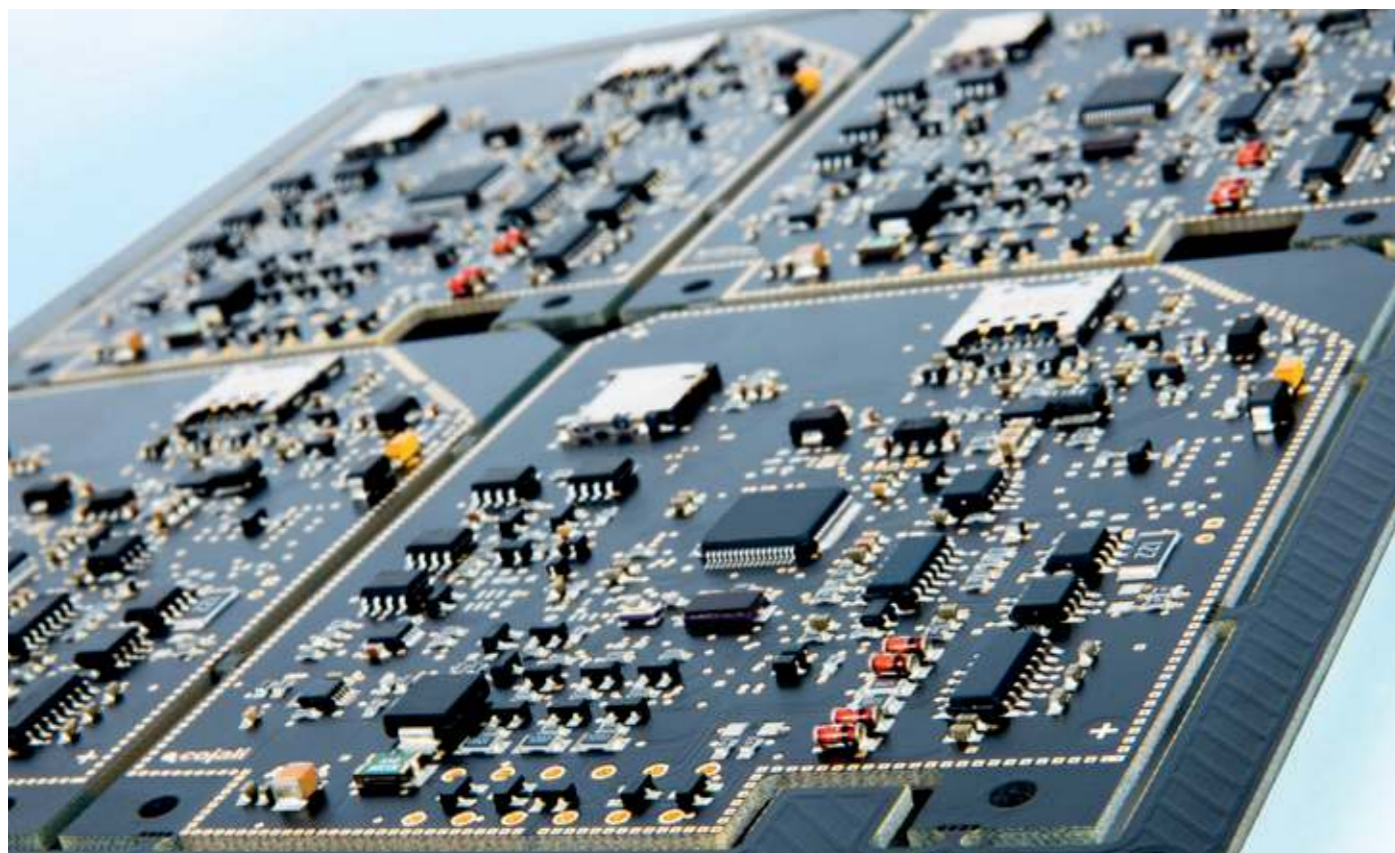
Diagnostics



Electronics



Telematics

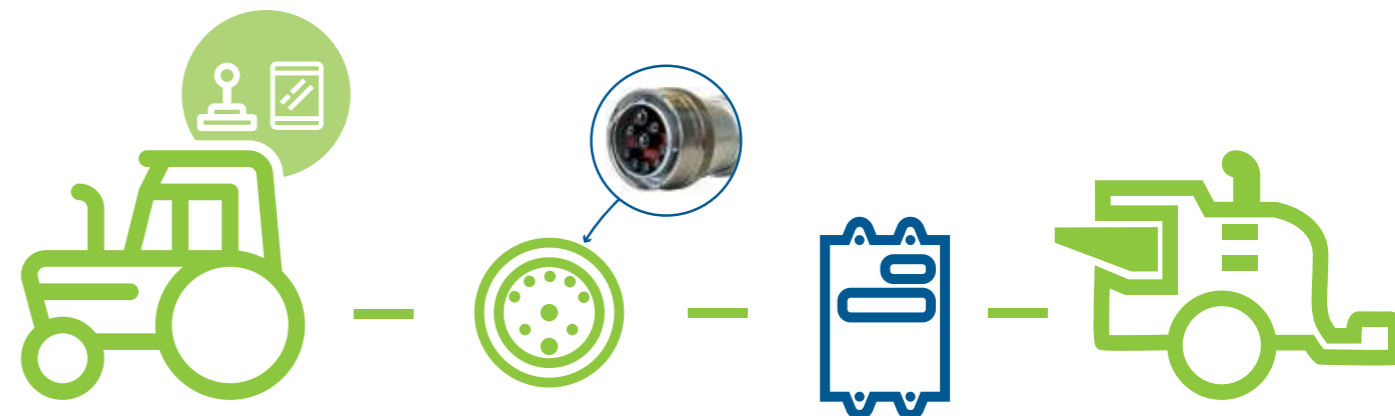


## TECHNOLOGICAL SOLUTIONS FOR IMPLEMENTS

Cojali offers customized solutions for implement manufacturers to comply with ISOBUS rule (ISO-11783).

## COMPETITIVE ADVANTAGES

- Integrated solution for manufacturers of agricultural implements.
- The need for multiple screens and installations is avoided.
- Full compatibility with all tractor manufacturers.
- Better and more accurate agriculture.
- Better use of seeds and fertilizers.
- Easy adaptation of implements with new ISOBUS technology.



# “Cooling Systems for Agricultural Equipment.”

THE WIDEST RANGE OF COOLING SYSTEMS FOR:

JOHN DEERE

CASE IH

FENDT

BELARUS

FORD

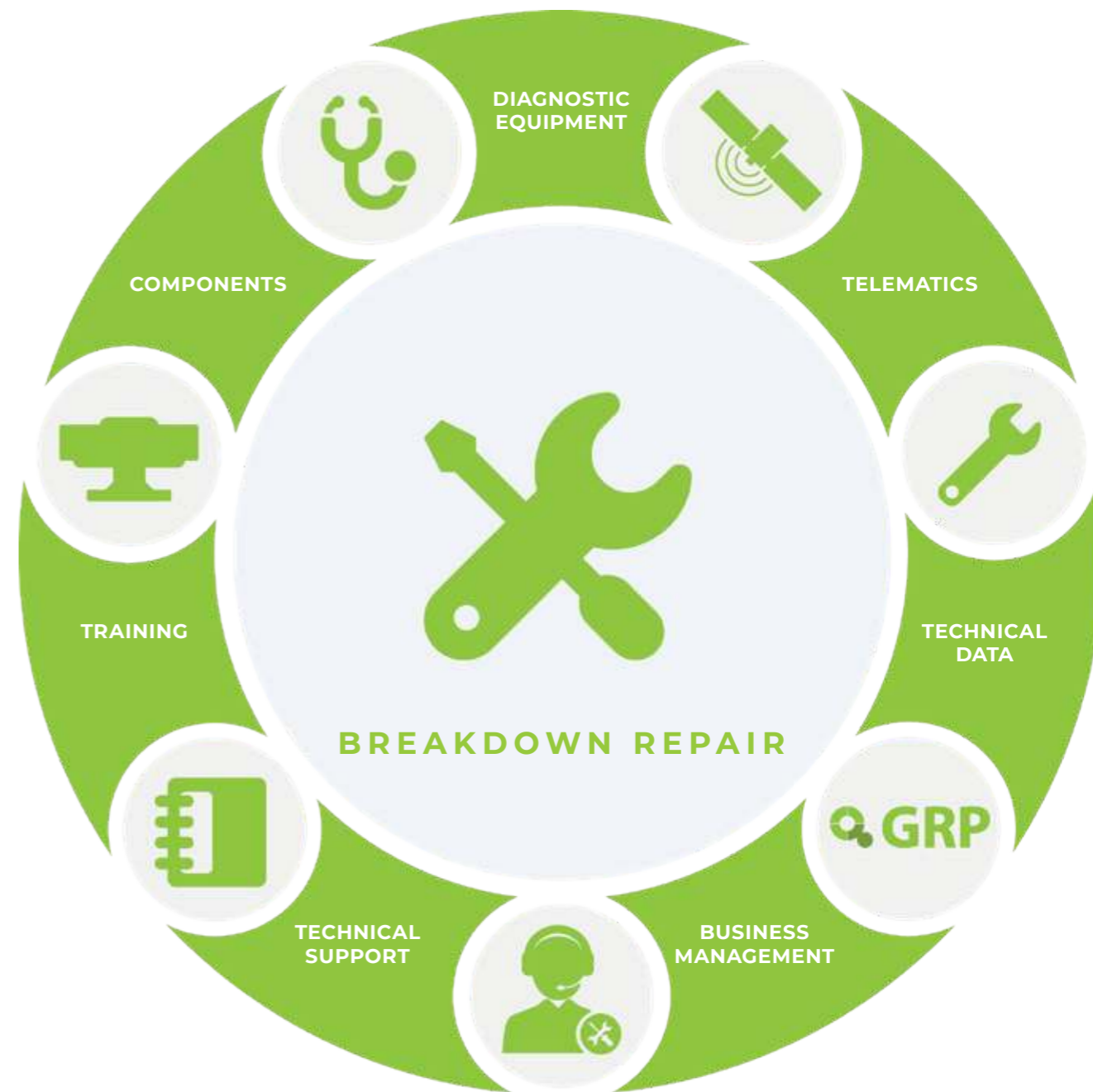
MASSEY FERGUSON

McCORMICK

NEW HOLLAND



COJALI. WE MEET ALL YOUR BUSINESS NEEDS.





#### HEAD OFFICE

COJALI S.L. Avenida de la Industria, S/N · 13610 · Campo de Criptana · Spain  
National Tel.: +34 926 589 670 · [cojali@cojali.com](mailto:cojali@cojali.com)  
International Tel: +34 926 589 671 · [export@cojali.com](mailto:export@cojali.com)

#### NORTH AMERICA

Cojali USA, Inc. 2200 NW 102nd Avenue #4b · Doral, FL 33172, USA  
Tel: (+01) 305 960 7651 · Toll free: 1-800-975-1865 · Mexico: +52-5546312236  
[customersupport@jaltest.com](mailto:customersupport@jaltest.com) · [info@cojaliusa.com](mailto:info@cojaliusa.com)

[jaltest.com](http://jaltest.com)  
[cojali.com](http://cojali.com)  
[jaltest-telematics.com](http://jaltest-telematics.com)

2018 V.2 EN



Local Distributor